

Human NKp46/NCR1/CD335 Protein

Cat. No. NKP-HM146

Description

Source	Recombinant Human NKp46/NCR1/CD335 Protein is expressed from HEK293 with His tag at the N-Terminus. It contains Gln22-Asn254.
Accession	AAH64806.1
Molecular Weight	The protein has a predicted MW of 27.5 kDa. Due to glycosylation, the protein migrates to 38-48 kDa based on Bis-Tris PAGE result.
Endotoxin	Less than 1EU per μg by the LAL method.
Purity	> 95% as determined by Bis-Tris PAGE > 95% as determined by HPLC

Formulation and Storage

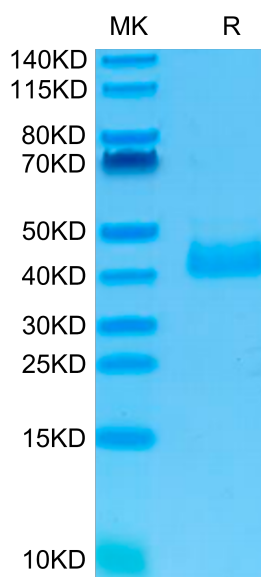
Formulation	Lyophilized from 0.22 μm filtered solution in PBS (pH 7.4). Normally 8% trehalose is added as protectant before lyophilization.
Reconstitution	Centrifuge the tube before opening. Reconstituting to a concentration more than 100 $\mu\text{g}/\text{ml}$ is recommended. Dissolve the lyophilized protein in distilled water.
Storage	-20 to -80°C for 12 months as supplied from date of receipt. -80°C for 3 months after reconstitution. Recommend to aliquot the protein into smaller quantities for optimal storage. Please minimize freeze-thaw cycles.

Background

NKp46, along with NKp30 and NKp44, are activating receptors that have been collectively termed the natural cytotoxicity receptors (NCR). These receptors lack significant sequence homology to one another. They are expressed almost exclusively by NK cells and play a major role in triggering some of the key lytic activities of NK cells.

Assay Data

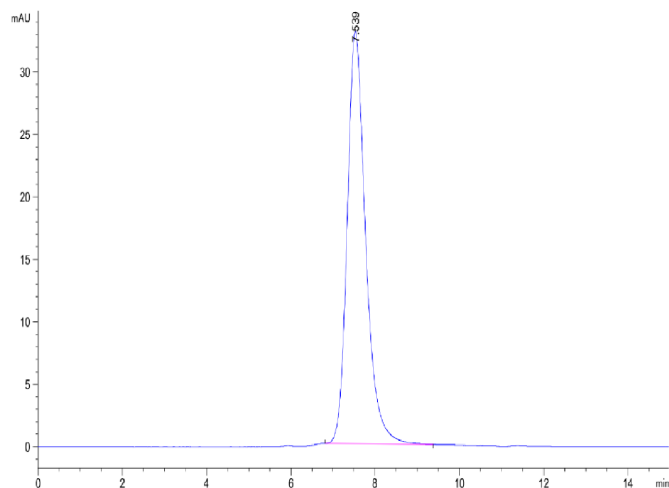
Bis-Tris PAGE



Human NKp46 on Bis-Tris PAGE under reduced condition. The purity is greater than 95%.

SEC-HPLC

Assay Data

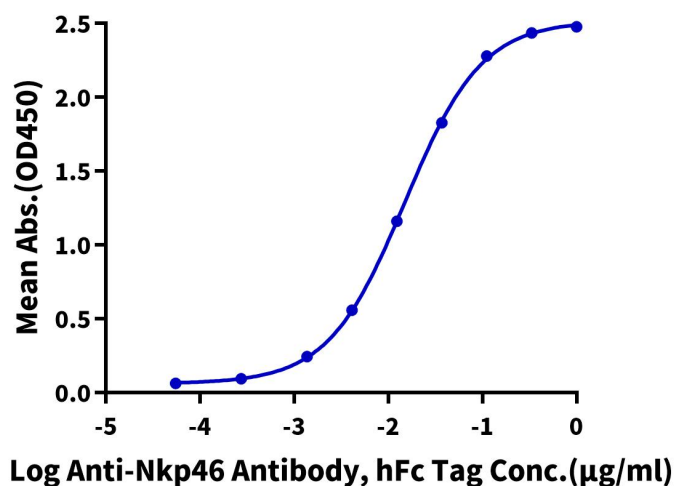


The purity of Human NKp46 is greater than 95% as determined by SEC-HPLC.

ELISA Data

Human NKp46, His Tag ELISA

0.1µg Human NKp46, His Tag Per Well



Immobilized Human NKp46, His Tag at 1µg/ml (100µl/well) on the plate. Dose response curve for Anti-Nkp46 Antibody, hFc Tag with the EC50 of 15.0ng/ml determined by ELISA.